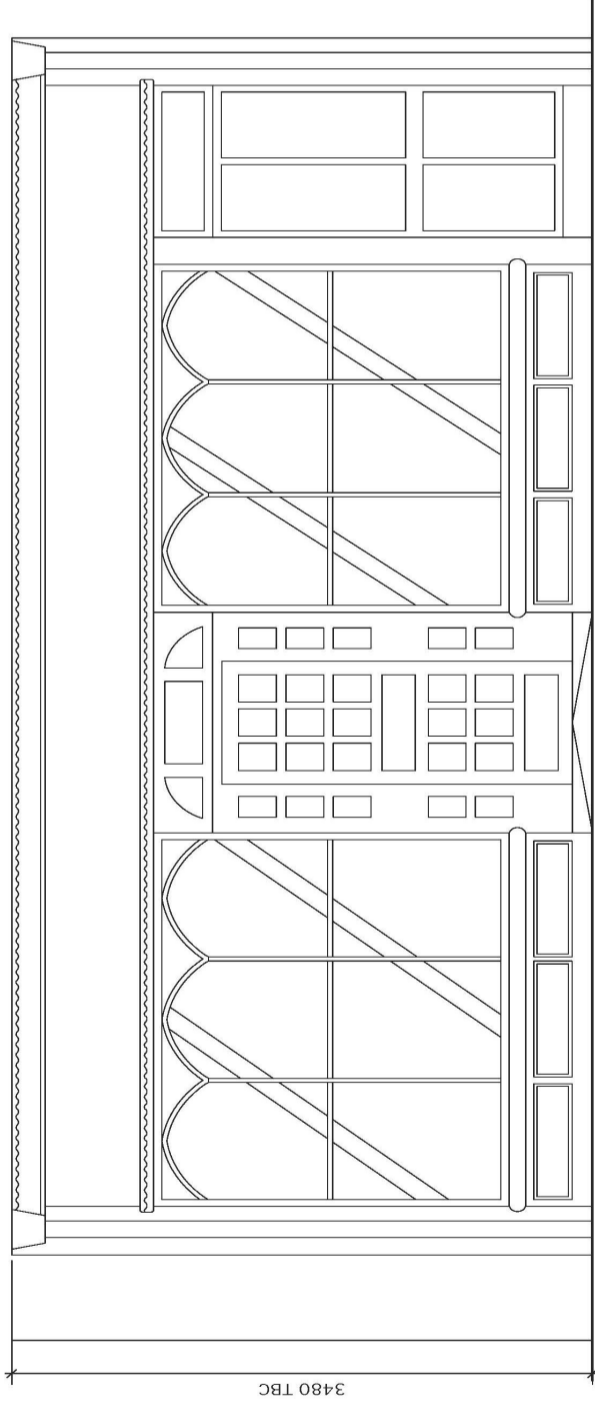


564/S/004

MARKET PLACE



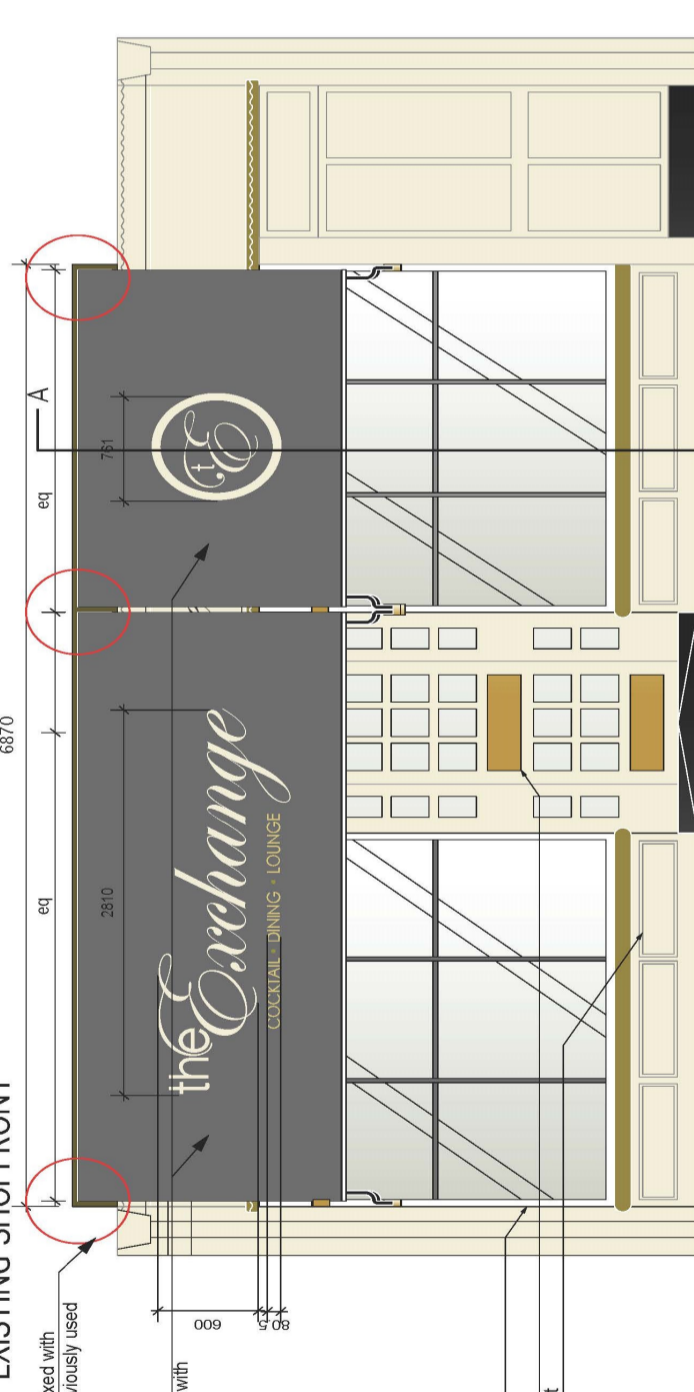
EXISTING SHOPFRONT

Red circles indicate hidden fixing bracket fixed with 4no. m8 resin anchor bolts in positions previously used

New fabric drop arm victorian awning
Screen printed lettering in Dark grey fabric with cream lettering

White paint to window trims

Existing brassletter box and kick plate
F&B Off White Generally across shopfront



PROPOSED SHOPFRONT

Timber awning box
F&B Londown Clay yo Awning Box

F&B Downpipe Frame detail
New traditional hand painted signage
Colour Dark Bronzedirect onto fascia
F&B Cinder Rose to fascia

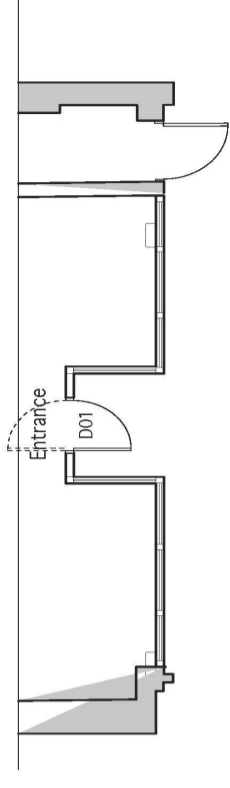
F&B Ash Grey to Fascia Detail

Main Shopfront F&B Off White

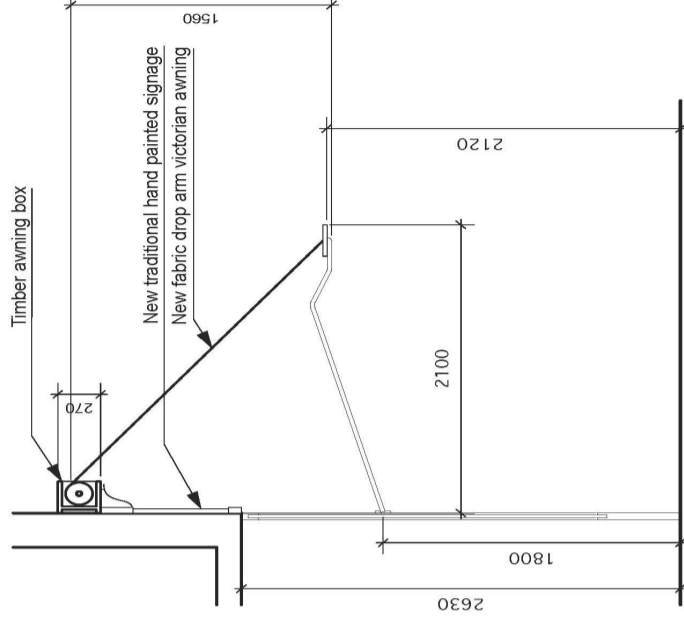


PROPOSED SHOPFRONT

F&B Ash Grey paint to window Cill
F&B Downpipe to Arches and Cross members



PLAN 1:100



SHOPFRONT SECTION A-A

Hidden brackets at either end of Awning section, 4x M8 Resin Anchor bolts into brickwork, In pre-existing locations currently covered



Counter sunk screws to existing Shopfront

DROP ARM AWNING

JULIAN
AWNING FABRIC ASSOCIATES

Project: MARKET PLACE
Client: MARC E. INOUIE RANDALL
Contract No.: Shopfront
Drawing No.: 562-SH-002-A
Scale: 1:25 @ A1
Revision: B

The Main Office is in England and France. We have a branch office in the USA and a branch office in Australia. We are a member of the British Awning Manufacturers Association (BAMA).